

Conference Schedule

Tuesday, June 17, 2025

Time (UTC+7)	Agenda
08.30 - 09.00	Preparation and Registration
09.00 - 09.05	Opening (MC) and Singing the National Anthem of the Republic of Indonesia
09.05 - 09.20	Welcoming Dance: Balinese Dance
09.20 - 09.25	Opening Speech : General Chair of APL Organizing Committee (Prof. Ir. Tumiran, M.Eng., Ph.D.)
09.25 - 09.30	Opening Remarks : Chairman of The Indonesian Electricity Power Society (Ir. Evy Haryadi, M.Eng., IPU.)
09.30 - 09.35	Opening Remarks : Chairman of The APL International Steering Committee (Prof. Jinliang He)
09.35 - 09.55	Opening & Keynote Remarks : Rector of Gadjah Mada University (Prof. dr. Ova Emilia, M.Med.Ed., Sp.OG(K), Ph.D.)
09.55 - 10.15	Opening & Keynote Remarks : President Director of Indonesia State Electricity Company, Indonesia (Darmawan Prasodjo, Ph.D)
10.15 - 10.35	Opening & Keynote Remarks : Directorate General of Electricity, Indonesia (Ir. Jisman P. Hutajulu, M.M.)
10.35 - 10.40	Photo Session
10.40 - 10.50	Break
10.50 - 11.35	Keynote Speech (Prof. Jinliang He) Moderator : Nur Pramudji
11.35 - 12.20	Keynote Speech (Ir. Evy Haryadi, M.Eng., IPU) Moderator : Nur Pramudji
12.20 - 13.30	Lunch Break
13.30 - 15.10	Parallel Paper Presentation 1
15.10 - 15.20	Break
15.20 - 17.00	Parallel Paper Presentation 2

Wednesday, June 18, 2025

Time (UTC+7)	Agenda
08.30 - 09.00	Preparation and Registration
09.00 - 09.05	Opening (MC)
09.05 - 09.50	Keynote Speech (Prof. Madya Ir. Ts. Dr. Muhammad Saufi Bin Kamarudin) Moderator : Nur Pramudji
09.50 - 10.35	Keynote Speech (Michihiro Matsui, B.Eng., Ph.D.) Moderator : Bambang Praptono
10.35 - 10.45	Break
10.45 - 11.30	Keynote Speech (Prof. Dr. Dipl. Ing. Ir. Reynaldo Zoro) Moderator : Bambang Praptono
11.30 - 12.15	Keynote Speech (Dieter Poelman, Ph.D.) Moderator : Pak Waluyo Nugroho H.
12.15 - 13.30	Lunch break
13.30 - 15.10	Parallel Paper Presentation 3
15.10 - 15.20	Break
15.20 - 16.40	Parallel Paper Presentation 4
18.00 - 20.00	Gala Dinner

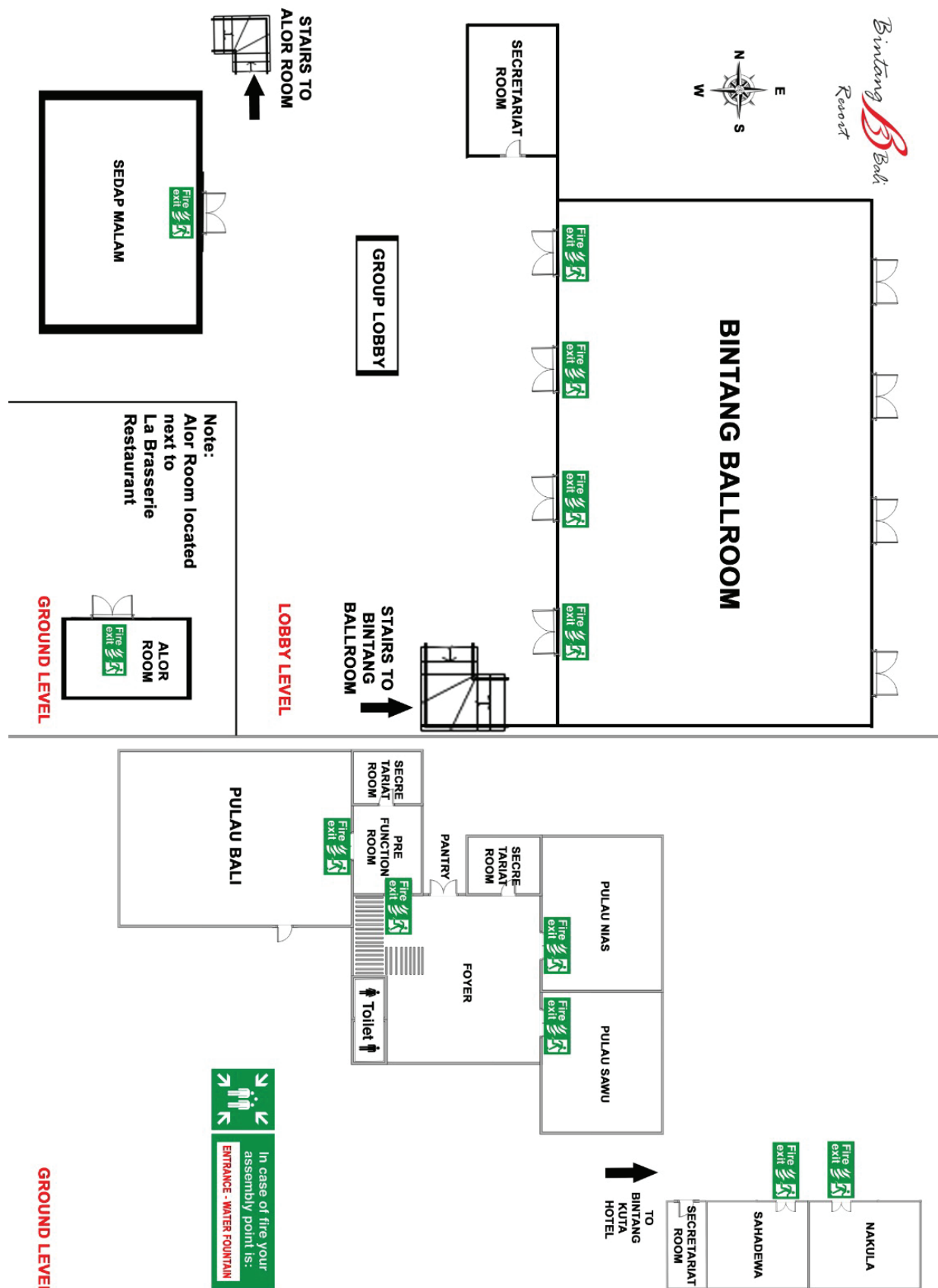
Thursday, June 19, 2025

Time (UTC+7)	Agenda
08.30 - 09.00	Preparation and Registration
09.00 - 09.05	Opening (MC)
09.05 - 10.35	Parallel Workshop 1 (Room 1: Prof. Kawasaki)
	Parallel Workshop 1 (Room 2 : DEHN)
10.35 - 10.45	Break
10.45 - 12.15	Parallel Workshop 2 (Room 1 : Prof. Wenfeng Liu)
	Parallel Workshop 2 (Room 2 : PLN Nusa Daya)
12.15 - 13.30	Lunch Break
13.30 - 15.10	Parallel Paper Presentation 5

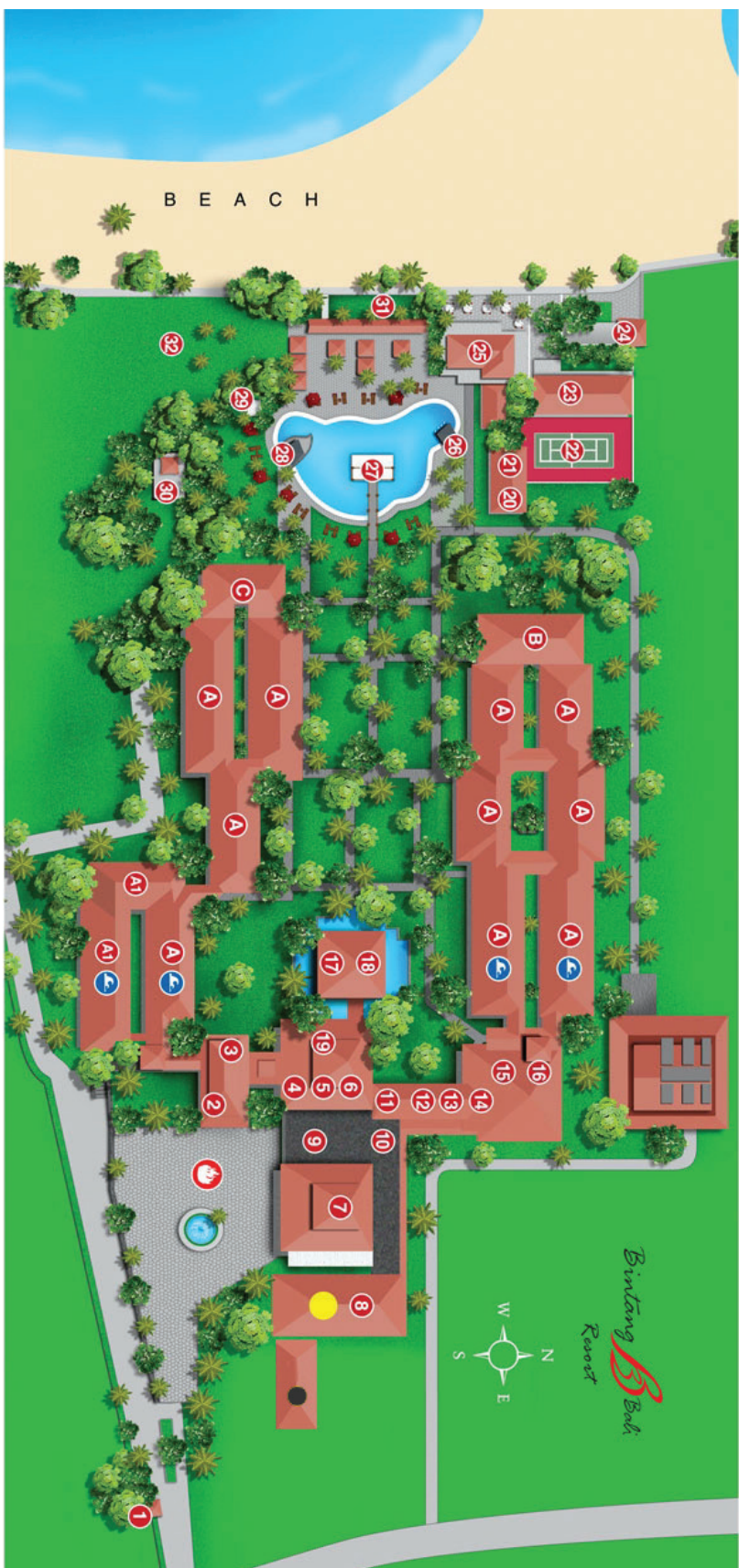
Friday, June 20, 2025

Time (UTC+7)	Agenda
08.30 - 09.00	Preparation and Registration
09.00 - 09.05	Opening (MC)
09.05 - 10.00	Future Collaboration Discussion
10.00 - 10.15	Break
10.15 - 10.45	Future Collaboration Discussion
10.45 - 11.00	Closing

Venue Maps



BINTANG BALI RESORT



Parallel Presentation Schedule

Parallel Paper Presentation Session 1 & 2 Tuesday, June 17, 2025

Room 1

Topic : Lightning Physics & Observation
Session Chair Session 1 : Fengquan Li
Co-Session Chair Session 1 : Hafisoh Ahmad
Session Chair Session 2 : Florent Giraudet
Co-Session Chair Session 2 : Rizki Firmansyah Setya Budi
Session PIC : Naili Lathifa Zahra

No	Time (UTC+7)	Paper Title	Presenter
SESSION 1			
1	13.30–13.50	High-Altitude Terrains Exhibit a Higher Proportion of High-Energy Lightning Strokes	Dong Zheng
2	13.50–14.10	Comparative Analysis of the Preliminary Breakdown in Normal- and Inverted-Polarity Intracloud Flashes	Dongdong Shi
3	14.10–14.30	A Macro-Physical Model for Narrow Bipolar Events	Yuhui Jiang
4	14.30–14.50	High-Speed Camera Observation of a Cloud-to-Ground Flash from a Tropical Thunderstorm	Muhammad Uwais Farihin Fauzi
5	14.50–15.10	Updates of Lightning Current Measurements on Shenzhen Meteorological Gradient Tower (2017-2023)	Shaoyang Wang
15.10-15.20		Break	
SESSION 2			
6	15.20–15.40	Low-Medium Frequency Characteristics of Bidirectional Leaders in Altitude-Triggered Lightning	Yanfeng Fan
7	15.40–16.00	Extraction of Lightning Channels from Optical Images and Calculation of Fractal Dimension	Fengquan Li
8	16.00–16.20	The Dynamics of Laser-Driven Ionisation in High-Voltage Circuit Switching	Jan Mikeš
9	16.20–16.40	Influences of the Earth Conductivity on Electric Fields Radiated from Lightning Strikes to Tall Towers	Shunsuke Nishimura
10	16.40-17.00	The Roles of Rainfall Rate and Cloud Top Height in Lightning Activity During Northeastern Monsoon in Malay Peninsula	Mohd Riduan Ahmad

Room 2

Topic : Lightning Protection, Grounding & Surge Devices
Session Chair Session 1 : Xiaodong Li
Co-Session Chair Session 1 : Hira Laksmiwati
Session Chair Session 2 : Yoshihiro Baba
Co-Session Chair Session 2 : Bryan Denov
Session PIC : Rihadatul Aisy Nafia Putri

No	Time (UTC+7)	Paper Title	Presenter
SESSION 1			
1	13.30–13.50	Rationales and Expectations with Upcoming New Line Surge Arrester (LSA) Standard IEC/ IEEE 60099-11	Florent Giraudet
2	13.50–14.10	Research on Life Prediction of Surge Protective Device Based on Machine Learning	Guanping Xie
3	14.10–14.30	Evaluation for the Lightning Overvoltage at the Distribution Boards of a Building Using Steel Frames Grounding System	Yuta Niwa
4	14.30–14.50	Protection Measures for Lightning Overvoltages in the Low-Voltage DC Power Supply System	SeungCheol Baek
5	14.50–15.10	Design Method of Solder Joint in Surge Protective Device by Simulation	Xiaodong Li
15.10-15.20		Break	
SESSION 2			
6	15.20–15.40	Development of a Microwave Interferometer System for Corona Discharge Mapping	Mohd Riduan Ahmad
7	15.40–16.00	Early Streamer Emission Lightning Protection Systems: Global Views Revisited	Chandima Gomes
8	16.00–16.20	Evaluation of the Protective Performance of the Lightning Arrester Installation to Reduce Lightning Outage Rate on 150 kV Transmission Lines	Fathurrohman Fathurrohman
9	16.20–16.40	Comparison and Analysis of Grounding Impedance Measurement for Power Plant Grounding Device by Using Different Methods	Hao Zhu
10	16.40-17.00	A Study on Accident of Surge Arrester Due to Backflow Lightning Caused by Winter Lightning Strike on Wireless Communication Tower	Shota Higuchi

Room 3

Topic : Modeling, Simulation & Diagnostics
Session Chair Session 1 : Mohd Zainal Abidin Ab Kadir
Co-Session Chair Session 1 : Andi M Nur Putra
Session Chair Session 2 : Wijaya Yudha Atmaja
Co-Session Chair Session 2 : Yuhui Jiang
Session PIC : Maria Avellia Karisya W.

No	Time (UTC+7)	Paper Title	Presenter
SESSION 1			
1	13.30–13.50	Locating Lightning Strikes in Transmission Lines Using Electromagnetic Time Reversal Method Based on Criterion of Voltage Energy	Yuyan Xu
2	13.50–14.10	Simulation of Overvoltage in Photovoltaic Energy Storage System Caused by Lightning Strike	Yumin Song
3	14.10–14.30	Research on Simulation and Optimization Strategies for Lightning Strike Performance of Grounding Grid and Lightning Rod in 110kV Substation	Wei Wang
4	14.30–14.50	Assessment of Overvoltage in Double-Circuit Distribution Lines Caused by Direct Lightning Strokes Under Various Conditions	Chakhung Yeung
5	14.50–15.10	Optimizing Tower Footing Resistance and Arcing Horn Length for Improving Lightning Performance on 275 kV Transmission Lines	Mohd Zainal Abidin Ab Kadir
15.10-15.20		Break	
SESSION 2			
6	15.20–15.40	Coupled Electromagnetic and Heat Analysis of a ZnO Disk with the FDTD Method in the 2D Cylindrical Coordinate System	Tatsuki Suwa
7	15.40–16.00	Observations of Rocket Triggered Lightning Discharge in Winter Thunderstorms in Japan Using a Broadband VHF Interferometer	Yuji Takayanagi
8	16.00–16.20	Simulation Research on Lightning Withstand Level of 500kV/±800kV Hybrid Tower Large Crossing Transmission Line Considering Leader Current	Yuan Yang
9	16.20-16.40	Application Research of Lightning Warning Device for Transmission Lines in the Prediction of Severe Convective Thunderstorm Activities	Shanqiang Gu

Room 4

Topic : Risk Assessment, Prediction & Machine Learning
Session Chair Session 1 : Shirley Rufus
Co-Session Chair Session 1 : Nining Poerwasih
Session Chair Session 2 : Stephane Pedeboy
Co-Session Chair Session 2 : Amira Hanun
Session PIC : Nadya Aji Salsabilla

No	Time (UTC+7)	Paper Title	Presenter
SESSION 1			
1	13.30–13.50	Lightning Activity Patterns Across Regions Using the Chi-Square Test	Noraishah Bahari
2	13.50–14.10	Clustering the Diurnal Cycle of Lightning Using LIS Global Satellite Data	Huangjie Kong
3	14.10–14.30	Research on Automatic Extraction of Key Parameters of Lightning Risk Assessment Based on Laser Point Cloud of Transmission Line	Zijian Li
4	14.30–14.50	Failure Risk Assessment of Medium-Voltage Distribution Lines in the Central Area of Japan	Shunsuke Onda; Shoma Imai
5	14.50–15.10	Thunderstorm Prediction Model Using Hybrid Clustering and Machine Learning Approach	Shirley Rufus
15.10-15.20		Break	
SESSION 2			
6	15.20–15.40	Study on Localized Lightning Strike Prediction Using Machine Learning ~Validation Using the Vector Autoregression Model~	Shoya Watanabe
7	15.40–16.00	Impact of Tower Grounding Resistance on Insulator Flashover Risk in 500 kV HVDC Transmission Systems Under Lightning Strikes	Shirley Rufus
8	16.00–16.20	Statistical Model Limitations of Ground Flash Density for Lightning Risk Assessment	Chenyong Yi
9	16.20-16.40	Statistical Characteristics of Cloud-to-Ground Lightning Across Different Regions in China	Han Zhang

Parallel Paper Presentation 3 & 4
Wednesday, June 18, 2025

Room 1

Topic : Lightning Physics & Observation
Session Chair Session 3 : Peipei Li
Co-Session Chair Session 3 : Mohd Riduan Ahmad
Session Chair Session 4 : Xiangqian Liu
Co-Session Chair Session 4 : Andika Bagaskara
Session PIC : Naili Lathifa Zahra

No	Time (UTC+7)	Paper Title	Presenter
SESSION 3			
1	13.30–13.50	Comparative Analysis of Lightning-Generated Electromagnetic Field Propagation in Mountainous Terrain: a Study Using 2D Axisymmetric and 3D Models	Xiangqian Liu
2	13.50–14.10	Effectivity of Insulator Replacement to Avoiding Disturbance Caused by Lightning	Andika Bagaskara
3	14.10–14.30	Impact of Stem Branches Evolution on the Subsequent Development of Positive Leaders	Lili Guo
4	14.30–14.50	Site-Specific Transient Effects of Return Strokes on Buried Cables from Rocket-Triggered Lightning Strikes	Xiaoyu Lei
5	14.50–15.10	Observation and Analysis of a Multiple Lightning Strike Based on Dynamic Vision	Peipei Li
15.10-15.20		Break	
SESSION 4			
6	15.20–15.40	Relationship Between GDT Follow-Current Phenomenon and Active Gases	Yosuke Mimura
7	15.40–16.00	Remote System for Monitoring Failures in the Cubicle Type High Voltage Receiving Equipment	Kota Yamazaki
8	16.00–16.20	On the Effect of Rolling Sphere Penetration and Rod Spacing Configurations in Optimizing Lightning Protection for Solar Farms	Mohd Zainal Abidin Ab Kadir
9	16.20-16.40	Analysis Method and Three-Dimensional Distribution Characteristics of Cloud-to-Ground Lightning Under Mesoscale Topography	Shanqiang Gu

Room 2

Topic : Lightning Protection, Grounding & Surge Devices
Session Chair Session 3 : Koji Michishita
Co-Session Chair Session 3 : Mochammad Wahyudi
Session Chair Session 4 : Chandima Gomes
Co-Session Chair Session 4 : Hafisoh Ahmad
Session PIC : Rihadatul Aisy Nafia Putri

No	Time (UTC+7)	Paper Title	Presenter
SESSION 3			
1	13.30–13.50	Lightning Protection for Ancient Trees Based on Lightning Risk Assessment	YeBin Wang
2	13.50–14.10	Shape Evaluation Test of Diverter Strip for Lightning Protection of Wind Turbines	Kazuki Motoda
3	14.10–14.30	Indirect Lightning Strike Analysis of Blocking Diodes in a Large-Scale Photovoltaic System	Du Zhentao
4	14.30–14.50	Damage Mechanism Analysis of ZnO Varistor Under Multi-Pulse Lightning Current Experiment	Kunlin Zou
5	14.50–15.10	Damage Effects of Carbon Fiber Pultruded Plank of Wind Turbines Blades Subjected by the Lightning Charge Transfer Mode of Return Stroke	Quanxin Li
15.10-15.20		Break	
SESSION 4			
6	15.20–15.40	Establishing a Bypass Route for Surge Current Using SPD and SIT part2	Yasuharu Yamada
7	15.40–16.00	Advanced Preventive External Lightning Protection System to Mitigate Lightning Fire in Indonesia Oil Refinery	Bryan Denov
8	16.00–16.20	A Review of Lightning Protection Technologies for Electric Vehicles	Yi Zhou
9	16.20-16.40	Development of a Simulation Model to Design Lightning Protection Measures for an Overhead Railway Traction System in South Africa	Chandima Gomes

Room 3

Topic : Modeling, Simulation & Diagnostics
Session Chair Session 3 : Shozo Sekioka
Co-Session Chair Session 3 : Syarif Hidayat
Session Chair Session 4 : Lesnanto Multa Putranto
Co-Session Chair Session 4 : Nining Poerwasih
Session PIC : Maria Avellia Karisya W.

No	Time (UTC+7)	Paper Title	Presenter
SESSION 3			
1	13.30–13.50	Study on Insulator Local Arc Development Considering Energy Level Transition and Surface Particles	Zhenyuan Li
2	13.50–14.10	Simulation of Femtosecond Laser-Induced Positive Polarity Discharge	Zhehao Pei
3	14.10–14.30	FDTD-Based Electric-Field Analysis of a Small-Scale Airplane Model Under a Thundercloud	Tomoki Kitagawa
4	14.30–14.50	FDTD Analysis of Electric Fields at Ground Level Generated by Compact Intracloud Discharges	Ueda Shota
5	14.50–15.10	Design and Analysis of the Influence of Station Number, Distance, and Configuration on the Location Error of the 3-Dimensional Lightning Mapping System	Syarif Hidayat
15.10-15.20		Break	
SESSION 4			
6	15.20–15.40	Flashover Simulation in a 500 kV Transmission Line Considering Propagation Time Between a Ground Wire and a Phase Conductor	Shozo Sekioka
7	15.40–16.00	Application of Partial Discharge and Operational Parameters in Online Early Warning Systems for Enhanced Generator Reliability	Bobby Prayogo; Aditya Mahardhika; Aris Cahyono
8	16.00–16.20	Induced Overvoltage at the Terminations of a 10kV/220V Co-Pole Overhead Distribution Lines Caused by Rocket-Triggered Lightning Strikes 10 Metres Away	Jinxin Cao
9	16.20-16.40	Numerical Simulation Analysis of the Direct Effects of Lightning on Electric Vehicles	Ruixuan Chen

Room 4

Topic : Risk Assessment, Prediction & Machine Learning
Session Chair Session 3 : Han Yang
Co-Session Chair Session 3 : Shaoyang Wang
Session Chair Session 4 : Kota Yamazaki
Co-Session Chair Session 4 : Aginta Ramadhanu Anjani
Session PIC : Nadya Aji Salsabilla

No	Time (UTC+7)	Paper Title	Presenter
SESSION 3			
1	13.30–13.50	Lightning Warning Based on Extrapolation of Radar Composite Reflectivity Data	Yeqiang Deng
2	13.50–14.10	Historical Account on Non-Conventional Lightning Protection Systems and Their Impacts on Developing Countries: with Special Attention ESE Technology	Chandima Gomes
3	14.10–14.30	A Method for Lightning Disaster Risk Zoning Based on Multi-Source Data and Its Application in Anhui Province	Xiangyang Cheng
4	14.30–14.50	Application Research of Lightning Warning Device for Transmission Lines in the Prediction of Severe Convection Thunderstorm Activities	Fengquan Li
5	14.50–15.10	A Cloud Platform for Comprehensive Analysis of Lightning Intrusion Monitoring Based on Cluster Computing	Qian Zhang
15.10-15.20		Break	
SESSION 4			
6	15.20–15.40	Temporal and Spatial Distribution of Ground Flash Activity with Environmental Impact Factors Around Fangchenggang City, China	Han Yang
7	15.40–16.00	Data Analysis of Lightning Activity in High-Precision Lightning Monitoring System of Yunnan Distribution Network	Zhe Li
8	16.00–16.20	Lightning Risk Assessment Method for Important Facilities of New-Type Power System	Shanqiang Gu

Parallel Paper Presentation 5
Thursday, June 19, 2025

Room 1

Topic : Lightning Physics & Observation
Session Chair : Nuraslinda Anuar
Co-Session Chair : Dewa Ayu Putu Adhiya Garini Putri
Session PIC : Naili Lathifa Zahra

No	Time (UTC+7)	Paper Title	Presenter
1	13.30–13.50	Investigating Winter Lightning in Kanazawa, Japan: Results from Triggered Experiments and Multi-Parameter Observations	Muhammad Haziq Mohammad Sabri; Muhammad Zuhair
2	13.50–14.10	Study on the Characteristics of Intense Lightning Activity During a Spring Severe Thunderstorm Process in Southern China	Shanqiang Gu
3	14.10–14.30	Development of an LF Station for a Real-Time Lightning Detection System in Malaysia	Yu Wang
4	14.30–14.50	Characteristics of Thunderstorm Structure in South China and the South China Sea	Yijun Zhang; Zhiping Wen
5	14.50–15.10	Lightning-Terrain Association Mining Based on Improved Apriori Algorithm	Nuraslinda Anuar

Room 2

Topic : Lightning Protection, Grounding & Surge Devices
Session Chair : Roni Irnawan
Co-Session Chair : Ni Luh Putu Ika Candrawengi
Session PIC : Rihadatul Aisy Nafia Putri

No	Time (UTC+7)	Paper Title	Presenter
1	13.30–13.50	Analysis of the Effect of Installing Polymer Insulators and Dedicated Grounding Systems on the Number of Faults Due to Lightning Strikes of Transmission 150 kV	Tsanil Maarif
2	13.50–14.10	Mitigating Lightning Hazards in Open Mining Areas: a Mobile Lightning Protection System Approach	Bryan Denov
3	14.10–14.30	Analysis of Lightning Grounding Values Using Variations in Frequency, Distance Ratio, and Measurement Methods	Muhammad Alfian Sampurno
4	14.30–14.50	Implementation of Insulated Ground Shield Wire on 150 kV Transmission Lines	Dhany Irvandy
5	14.50–15.10	Understanding and Mitigating Lightning-Related Animal Fatalities: Case Studies, Injury Pathways, and Protection Measures	Chandima Gomes

Room 3

Topic : Modeling, Simulation & Diagnostics
Session Chair : Jan Mikeš
Co-Session Chair : Sitti Amalia
Session PIC : Maria Avellia Karisya W.

No	Time (UTC+7)	Paper Title	Presenter
1	13.30–13.50	Lightning Current Distribution in an Electric Vehicle	Haruka Horiba
2	13.50–14.10	A Differential-Based Broad-Band Electric Field Sensor for Detecting Lightning-Induced Electromagnetic Radiation Signals	Jialiang Tang
3	14.10–14.30	Measurement of Space Charge in ZnO-Based Flexible Arrester by LIPP Method	Zhikang Yuan
4	14.30–14.50	A History of the VHF Broadband Digital Interferometer of Lightning Research Group Osaka University	Zen Kawasaki
5	14.50–15.10	Frequency Domain Analysis of Contaminant Effects on Leakage Current and Harmonic Distortion for Transmission Line Diagnostics	Sitti Amalia

Room 4

Topic : Risk Assessment, Prediction & Machine Learning
Session Chair : Min-seok Kim
Co-Session Chair : Ahmad Adhiim Muthahhari
Session PIC : Nadya Aji Salsabilla

No	Time (UTC+7)	Paper Title	Presenter
1	13.30–13.50	Muti-Scaled Lightweight Neural Network Based Arc Fault Diagnosis: Feature Combination and Classification	Qianchao Wang
2	13.50–14.10	Evaluation of the Mutual Lightning Shielding Effect on Onshore Wind Farms	Stephane Pedeboy
3	14.10–14.30	Application of AI in Lightning and Thunderstorm Forecasting: a Vision for the Future	Chandima Gomes
4	14.30–14.50	Enhanced DOA Estimation for Lightning Sources Using MUSIC and Coherent Signal Subspace Method	Yu Wang
5	14.50–15.10	A Study on the Analysis of Malfunction Cases and Improvement Measures for Transmission Line Surge Arresters	Min-seok Kim; Yong-sun Cho